

8 7 6 5 4 3 2 1

A

SPECIFICATIONS
RATINGS:
 16A 125-250VAC 105°C UL, cUL
 16(4)A 250V~ μT85 1E4 VDE

CONTACT RESISTANCE:
 35mΩ Max.

INSULATION RESISTANCE:
 100MΩ Min.

DIELECTRIC STRENGTH:
 1,500VAC for 1 Minute

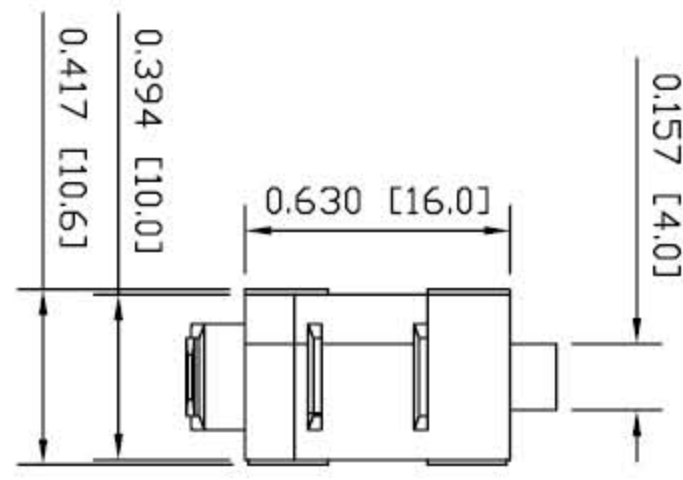
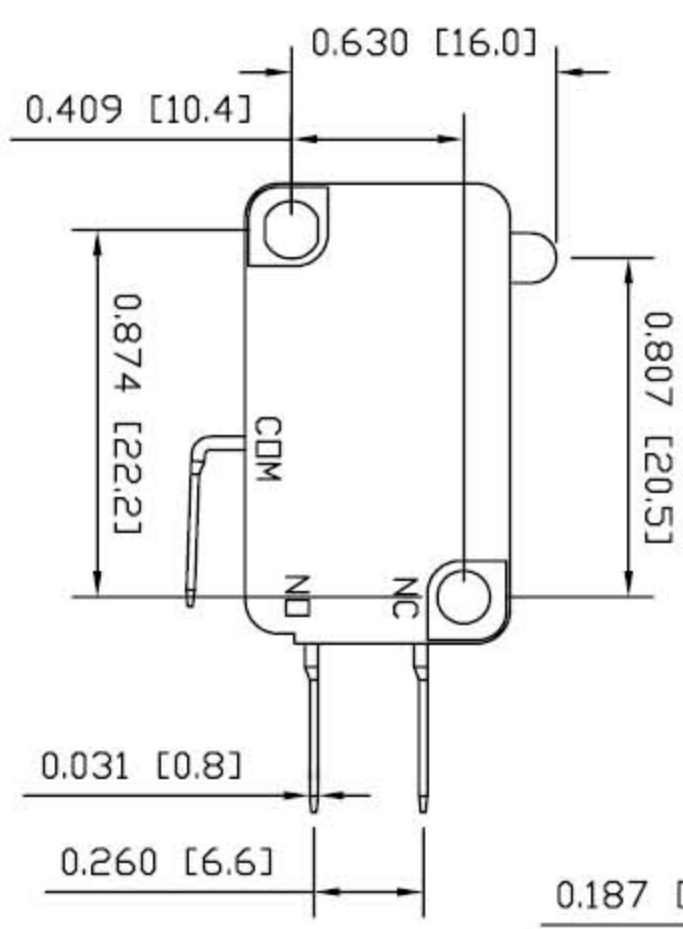
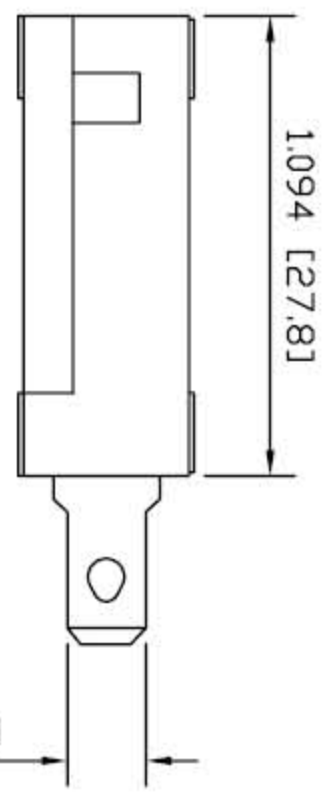
MATERIAL:

BODY: PBT

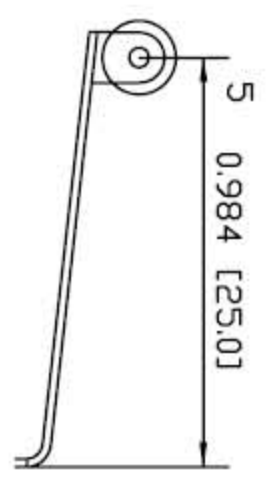
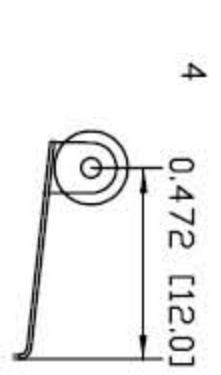
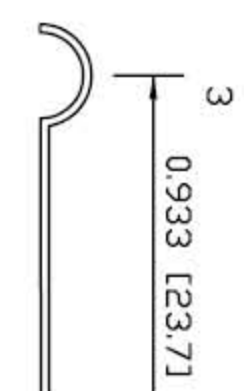
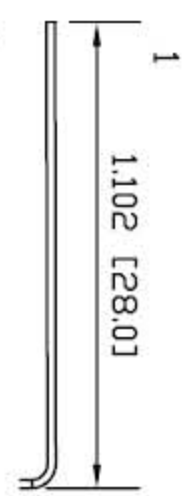
LEVER: Steel

CONTACTS: AgSnO₂In₂O₃ (Silver Alloy)

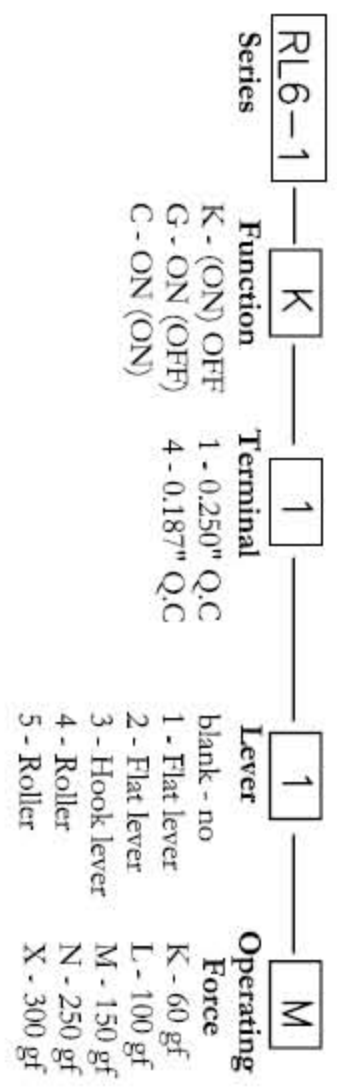
TERMINALS: Silver Plated Copper



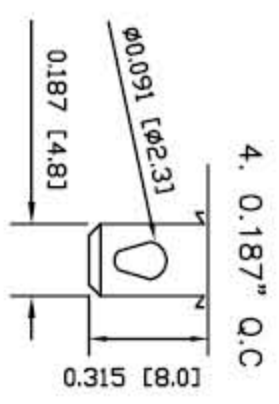
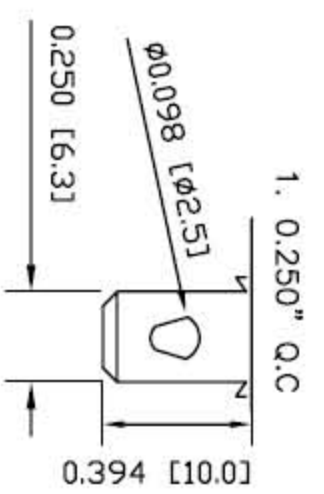
Lever Options:



How to Order:



Terminal Options:



PHASEDA LLC

RL6-1 series

SPECIFICATION SUBJECT TO CHANGE WITHOUT PRIOR NOTICE DIMENSIONS ARE IN INCHES [MILLIMETERS] TOLERANCES: DEC. X±0.2 DRAWING NOT TO SCALE DATE: JAN 2007

8 7 6 5 4 3 2 1

A

B

C

D