

8 7 6 5 4 3 2 1

SPECIFICATIONS

RATINGS:

15A 125VAC UL, cUL
 1/3HP 125-250VAC 85°C UL, cUL
 10A 125VAC UL, cUL

CONTACT RESISTANCE:

35mΩ Max. at 50VDC

INSULATION RESISTANCE:

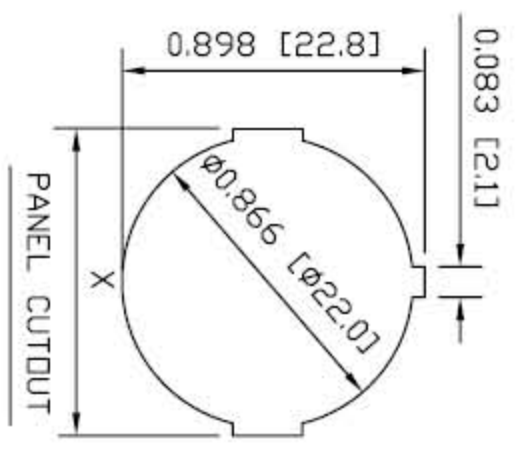
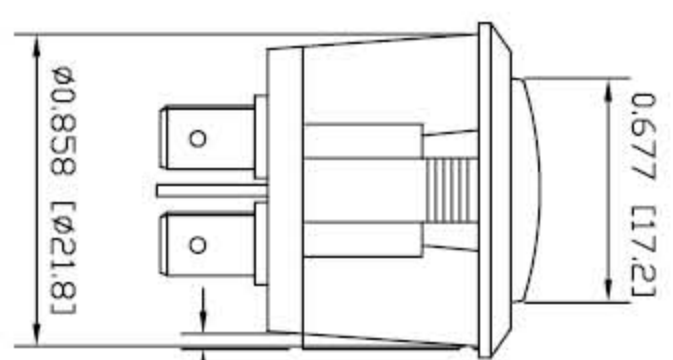
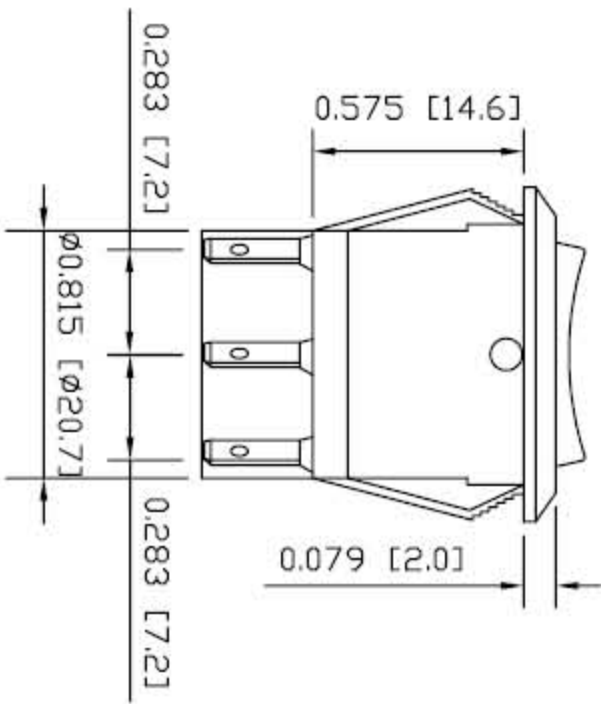
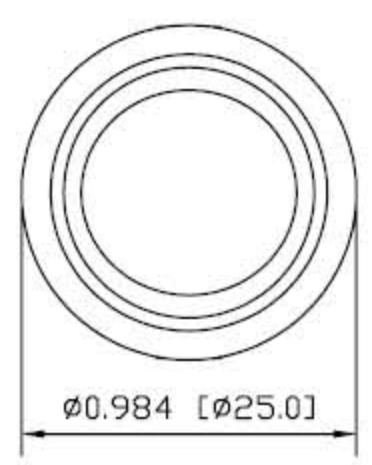
100MΩ at 500VDC

WITHSTAND VOLTAGE:

1,500VAC For 1 Minute

ELECTRICAL LIFE:

>10,000 Cycles



PANEL THICKNESS	X
0.030~0.049 [0.75~1.25]	0.874 [22.2]
0.049~0.079 [1.25~2.00]	0.882 [22.4]
0.079~0.118 [2.00~3.00]	0.890 [22.6]

MATERIALS

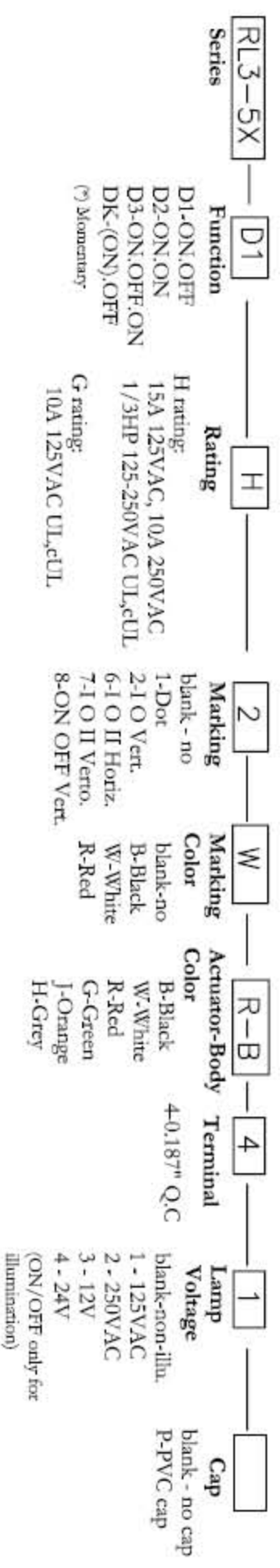
BODY:
PA66

ACTUATOR:
PA66, PC for illuminated rocker

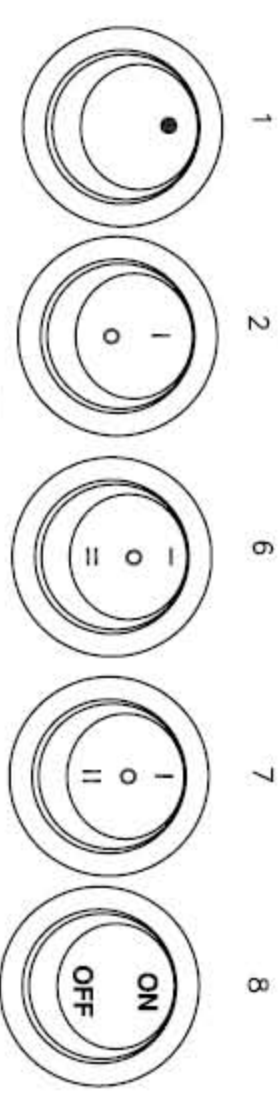
CONTACT:
Silver Alloy

TERMINALS:
Silver Plated Copper

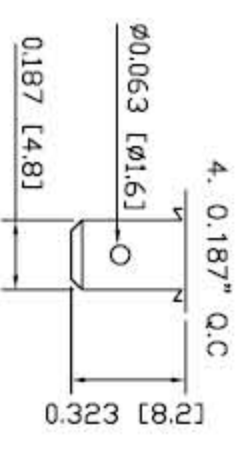
How to Order:



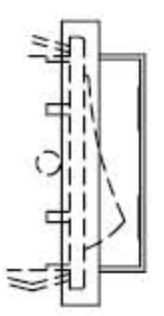
Marking Option:



Terminal Option:



PVC Cap



PHASEDA LLC

RL3-5X series

SPECIFICATION SUBJECT TO CHANGE WITHOUT PRIOR NOTICE

DIMENSIONS ARE IN INCHES [MILLIMETERS]

TOLERANCES: DEC. X±0.2

DRAWING NOT TO SCALE

DATE: JAN 2007

8 7 6 5 4 3 2 1

D

C

B

A