

8 7 6 5 4 3 2 1

A SPECIFICATIONS

RATINGS:

16A 125VAC, 10A 250VAC UL, cUL
 1/3A 125-250VAC 105°C UL, cUL
 10(4)A 250V~ 1E4 T125 VDE

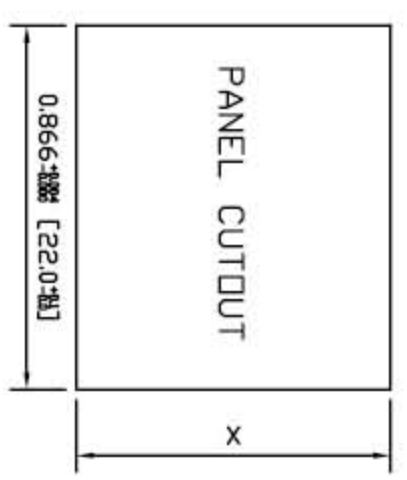
10A 125VAC UL, cUL
 6(2)A 250V~ 1E4 T125 VDE

CONTACT RESISTANCE:
 35mΩ Max 50VDC

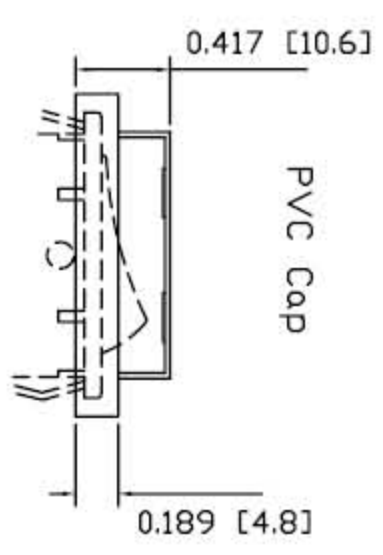
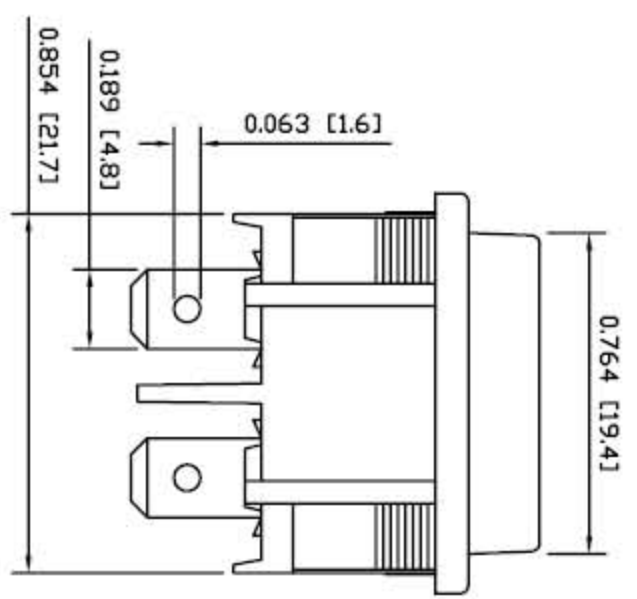
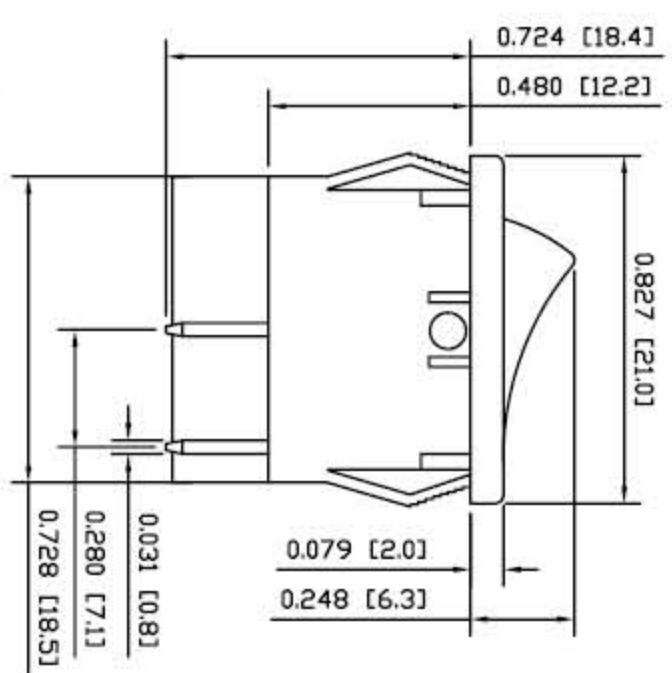
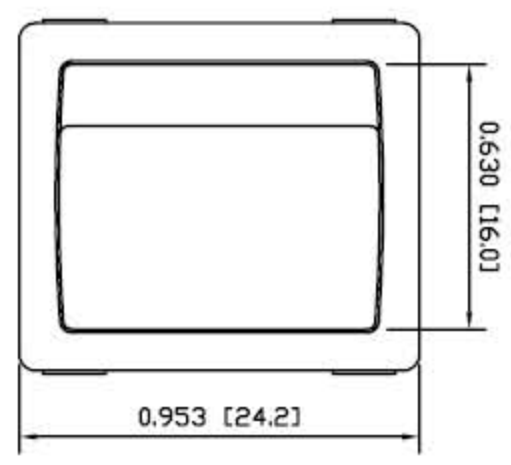
INSULATION RESISTANCE:
 100MΩ at 500VDC Min.

WITHSTAND VOLTAGE:
 1,500VAC For 1 Minute

ELECTRICAL LIFE:
 >10,000 Cycles



PANEL THICKNESS	X
0.030~0.049 [0.75~1.25]	0.756 [19.2]
0.049~0.079 [1.25~2.00]	0.764 [19.4]
0.079~0.118 [2.00~3.00]	0.772 [19.6]



B MATERIALS

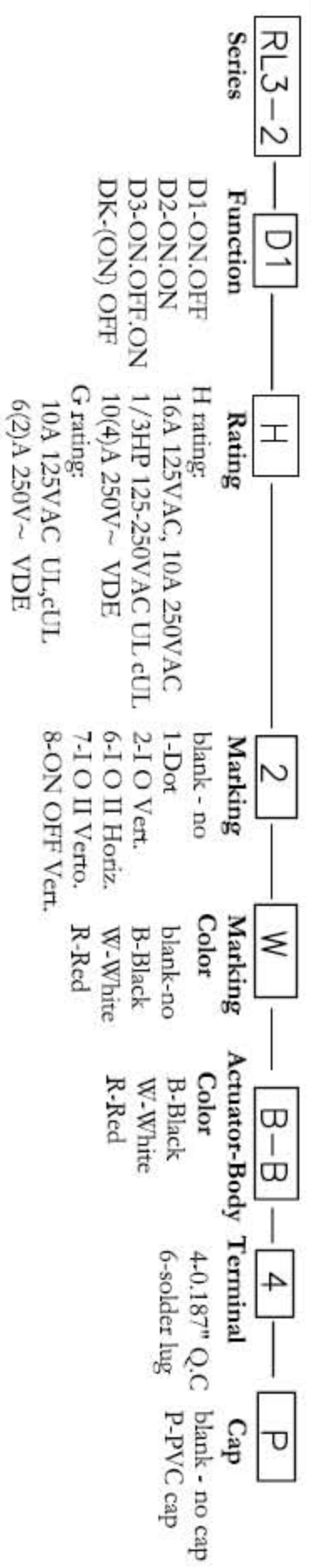
BODY:
PA66

ACTUATOR:
PA66, PC for illuminated rocker

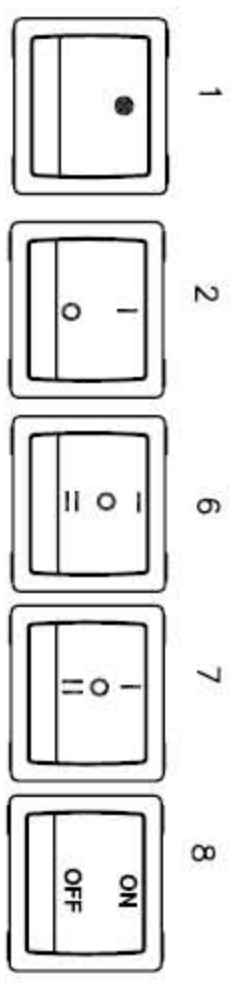
CONTACT:
Silver Alloy

TERMINALS:
Silver Plated Copper

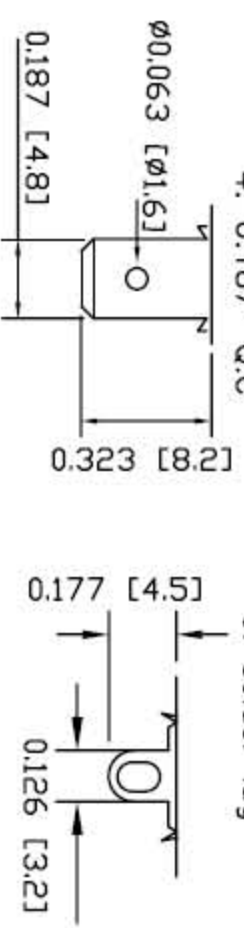
How to Order:



Marking Option:



Terminal Option:



PHASEDA LLC

RL3-2 Series

SPECIFICATION SUBJECT TO CHANGE WITHOUT PRIOR NOTICE
 DIMENSIONS ARE IN INCHES [MILLIMETERS]
 TOLERANCES: DEC. X±0.2 DRAWING NOT TO SCALE DATE: JAN 2007

8 7 6 5 4 3 2 1

D C B A