

8 7 6 5 4 3 2 1

**SPECIFICATIONS**

**RATINGS:**

15A 125VAC, 7.5A 250VAC UL, cUL

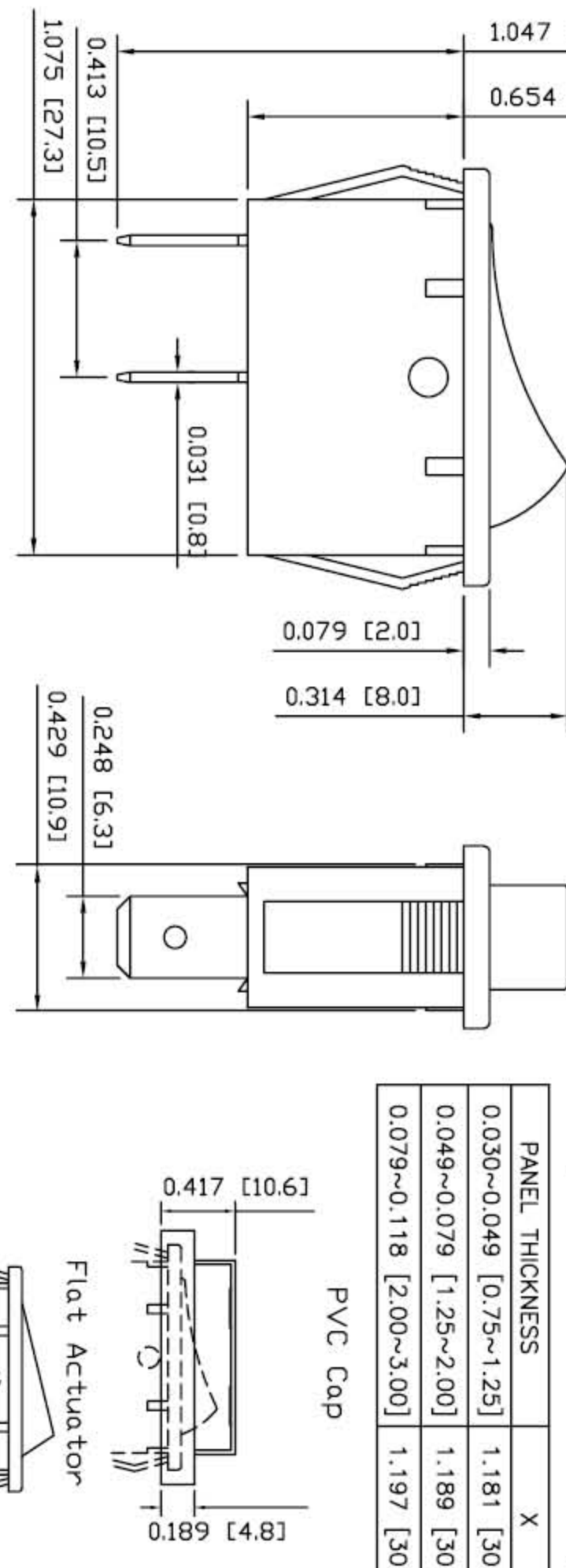
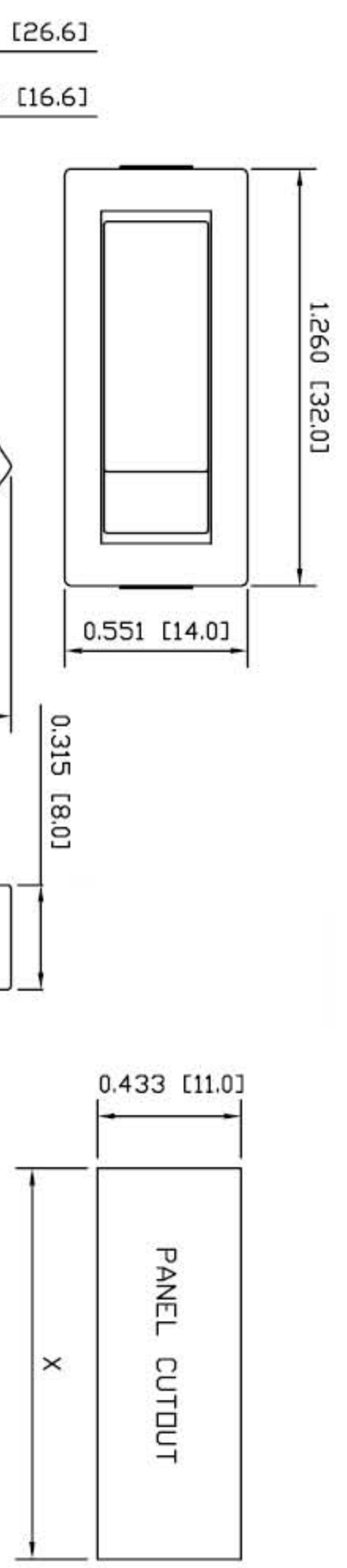
16(4)A 250VAC 1E4 T125 VDE  
16(8)A 250VAC 1E4 T125 VDE

**CONTACT RESISTANCE:**  
35mΩ Max.

**INSULATION RESISTANCE:**  
100MΩ at 500VDC

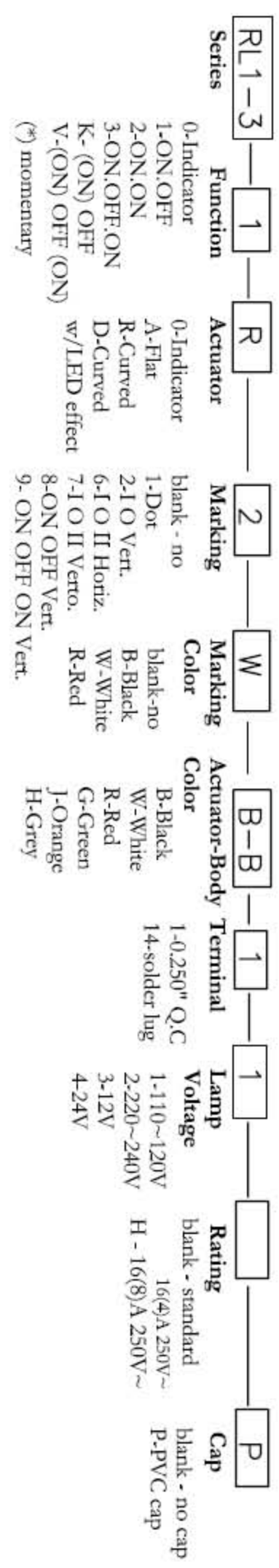
**WITHSTAND VOLTAGE:**  
1,500VAC For 1 Minute

**ELECTRICAL LIFE:**  
>10,000 Cycles

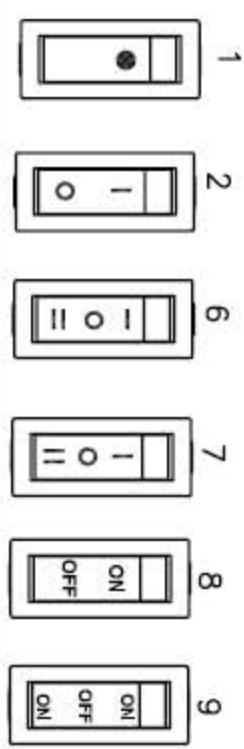


**MATERIALS**  
BODY: PA66  
ACTUATOR: PA66, PC for illuminated rocker  
CONTACT: Silver Alloy  
TERMINALS: Silver Plated Copper

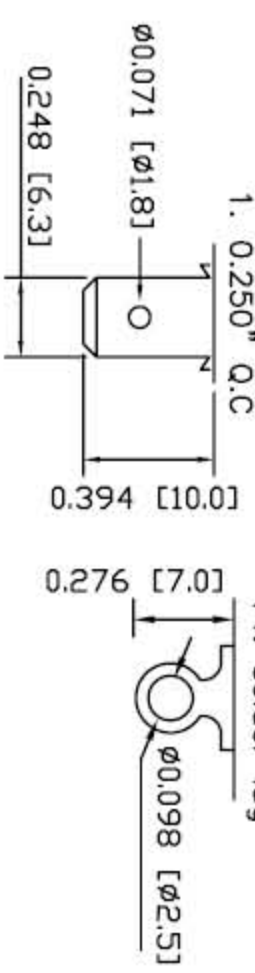
**How to Order:**



**Marking Option:**



**Terminal Option:**



PHASEDA LLC

RL1-3 series

SPECIFICATION SUBJECT TO CHANGE WITHOUT PRIOR NOTICE

DIMENSIONS ARE IN INCHES [MILLIMETERS]

TOLERANCES: DEC. X±0.2

DRAWING NOT TO SCALE

DATE: JAN 2007

8 7 6 5 4 3 2 1